

Model 1607

Portable APU/ESU Test System

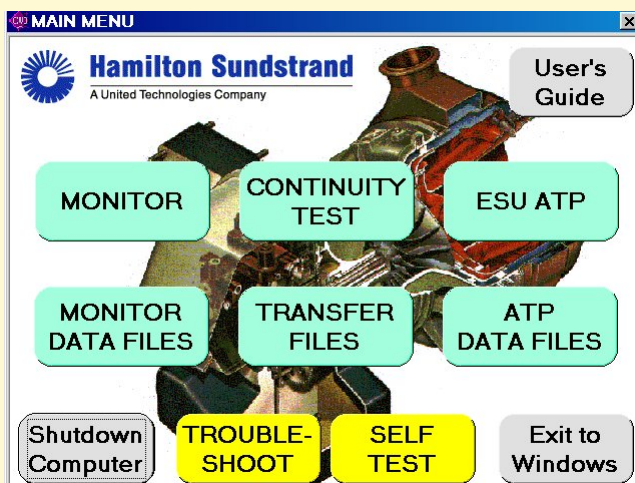
Field Testing of Sundstrand APS 500/1000 series APUs/ESUs

- Bench test ESUs
- Automated Start-up Monitor
- On aircraft cable harness continuity testing
- On aircraft continuous system performance/sequence monitor
- Automated fault data capture
- Built-in Self-Test and Calibration



System Features:

- Lightweight, portable system
- 'Rollaway' case with integral wheels and handle
- Sunlight readable LCD display
- Built-in Pentium PC with hard drive for data storage
- Rugged touch screen for operator input
- Easy-to-follow test software with a Graphical User Interface



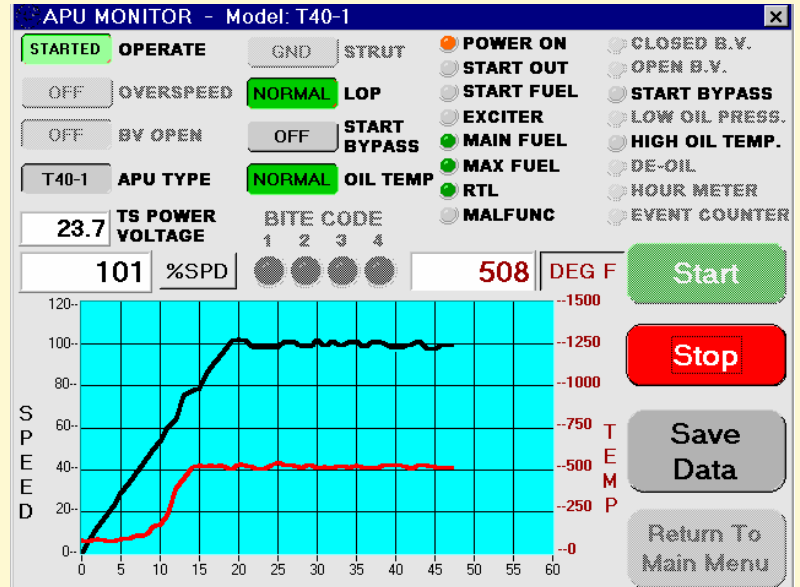
Hamilton Sundstrand
A United Technologies Company

Model 1607 Portable APU/ESU Test System

Currently configured for*

T40C7E1	T-2B
T40C8D1	T46C2
T40C7B	T46C3
T40C11	T46C7
T40-1	T40-1 DESU

(* adaptable to other
APU/ESU applications)



APU Monitor

- APU Start/Operation
- Fault/Malfunction

ESU Test Results

- Read only/Printout
- Pass/Fail
- Parameters/Limits

For more information
contact:

Ruth Vanderford
Hamilton Sundstrand
4400 Ruffin Rd.
P.O. Box 85757
San Diego, Ca. 92186-5757
(858) 627-6127 voice
(858) 627-6473 fax
r.vanderford@hs.utc.com

Purchase information
contact:

Becky Rogers
SYTRONICS, Inc.
Building 1
4433 Dayton-Xenia Road
Dayton, OH 45432
(937) 431-6110 voice
(937) 431-6400 fax
brogers@sytronics.com

Size:
22"(W) x 13"(D) x 12.5"(H)

Weight:
32 lbs (w/o cable harnesses)

Power:
100-240 Vac, 47-63 Hz
(Can be operated from
external battery or A/C
power for flight line testing)